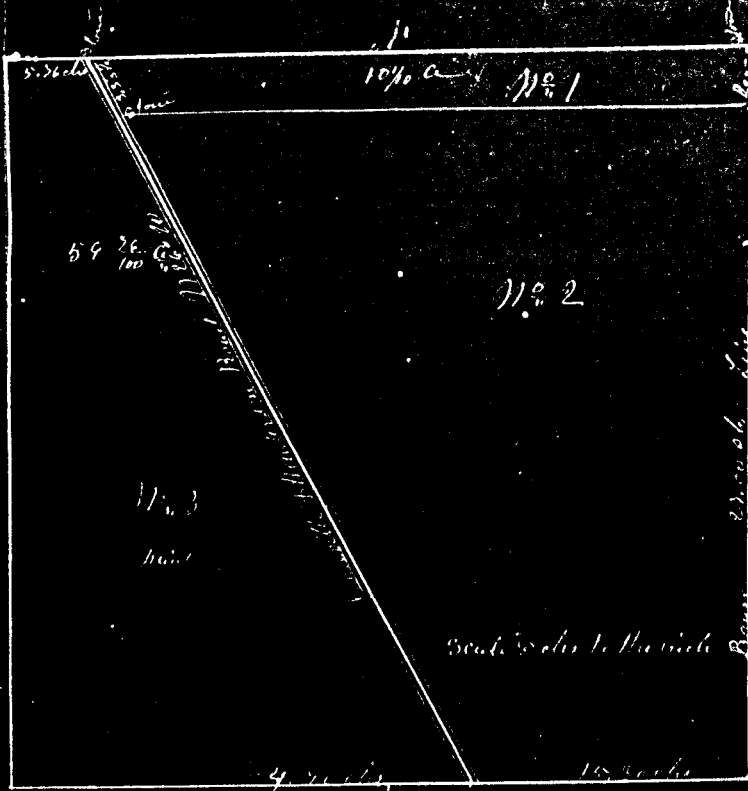


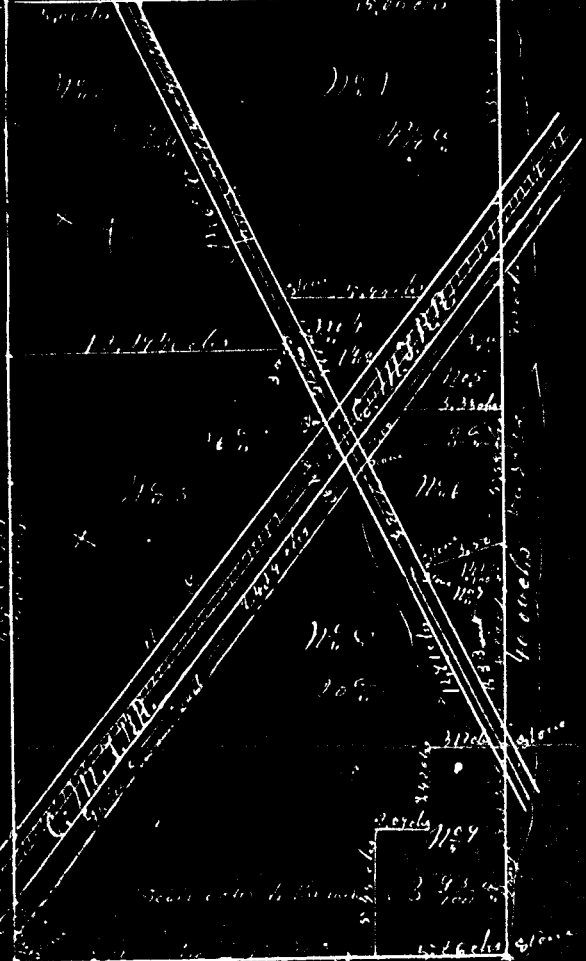
Plat of the N. E. 1/4 of Section 36 Twp 12 North Range One East of 4th P. M.



Surveyed and Plated for James M. Mustiey Esq. Assessor of the Township of Henderson. Courses and distances given in Lines, distances in chains and links. Areas in red. No. of Lots in black ink.

Plated and Surveyed July 23<sup>rd</sup> 1859  
 Attest  
 R. Lewis Esq. Co. Sur.  
 James M. Mustiey

Plat of the S. E. 1/4 of the S. E. 1/4 of Section 36 Township 12 North Range One East of 4th P. M.



Surveyed July 23<sup>rd</sup> 1859 for James M. Mustiey Esq. Assessor of Henderson. The distances given in Lines in chains and 100ths of a chain, areas in red ink. No. of Lots in black.

Lot No. 5 is School House Lot and is bounded on N.W. by Street Line all other lots extend to center of common Road.

Attest  
 R. Lewis Esq. Co. Sur.  
 July 23<sup>rd</sup> 1859 James M. Mustiey

26  
 21.04  
 16  
 12624  
 21 04  
 33664  
 1051  
 347.21

Surveyed and Plated for James M. Mustiey Esq. Assessor of the Township of Henderson.

Attest  
 R. Lewis Esq. Co. Sur.